



2023 Industrial Equipment Labeling



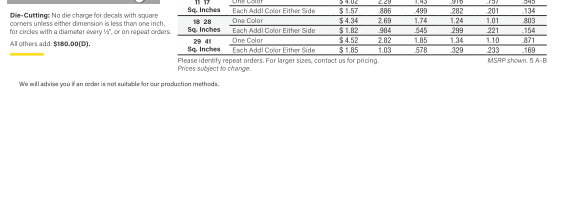
4-Color Process Outdoor Decals



Die-Cutting: No die charge for decals with square corners unless either dimension is less than one inch, for circles with a diameter every 1/2", or on repeat orders.
All others add \$180.00(D).

		125	250	500	1000	1500	2500
6 10	No. 49922 White Vinyl	\$1.96	1.30	914	563	430	365
	Sq. Inches	\$ 2.87	1.87	1.02	614	536	474
11 17	No. 49922 White Vinyl	\$3.50	2.09	122	752	566	599
	Sq. Inches	\$4.03	2.17	1.25	776	686	618
18 28	No. 49922 White Vinyl	\$4.62	2.78	1.68	1.11	389	888
	Sq. Inches						

Tuf-Cal Decals

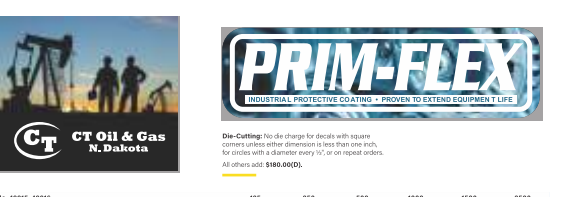


Die-Cutting: No die charge for decals with square corners unless either dimension is less than one inch, for circles with a diameter every 1/2", or on repeat orders.
All others add \$180.00(D).

		125	250	500	1000	1500	2500
6 10	No. 478 White Vinyl	\$3.44	2.07	1.21	789	611	424
	Sq. Inches	\$3.94	2.44	1.39	845	675	488
11 17	No. 478 White Vinyl	\$4.02	2.29	1.43	916	757	545
	Sq. Inches	\$4.52	2.81	1.51	1.00	850	613
18 28	No. 478 White Vinyl	\$5.17	3.05	1.89	1.24	801	534
	Sq. Inches	\$5.82	3.44	2.00	1.34	889	613
29 41	No. 478 White Vinyl	\$4.52	2.82	1.85	1.34	1.10	871
	Sq. Inches	\$5.15	3.13	2.00	1.34	1.10	871

2 We will advise you if an order is not suitable for our production methods.

4-Color Process Super-Tac and Ultra-Tac Decals



Die-Cutting: No die charge for decals with square corners unless either dimension is less than one inch, for circles with a diameter every 1/2", or on repeat orders.
All others add \$180.00(D).

		125	250	500	1000	1500	2500
6 10	No. 49915 Super-Tac White Vinyl	\$3.38	1.85	994	615	479	375
	Sq. Inches	\$4.02	2.24	1.19	739	575	445
11 17	No. 49915 Super-Tac White Vinyl	\$3.79	2.04	1.12	672	558	496
	Sq. Inches	\$4.56	2.49	1.34	813	675	594
18 28	No. 49915 Super-Tac White Vinyl	\$4.26	2.31	1.31	817	705	615
	Sq. Inches	\$5.34	2.92	1.54	1.02	885	765
29 41	No. 49915 Super-Tac White Vinyl	\$4.41	2.37	1.37	844	726	633
	Sq. Inches	\$5.62	3.02	1.72	1.07	930	805
42 56	No. 49915 Super-Tac White Vinyl	\$5.12	3.08	1.86	1.20	941	805
	Sq. Inches	\$6.08	3.78	2.38	1.60	1.38	1.19

3 We will advise you if an order is not suitable for our production methods.

4-Color Process Specialty Decals

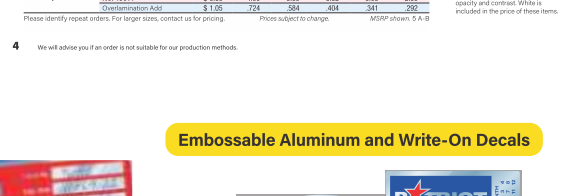


Die-Cutting: No die charge for decals with square corners unless either dimension is less than one inch, for circles with a diameter every 1/2", or on repeat orders.
All others add \$180.00(D).

		125	250	500	1000	1500	2500
6 10	No. 49905 Chrome	\$3.29	1.92	1.09	599	479	405
	Sq. Inches	\$3.57	1.91	1.09	645	538	440
11 17	No. 49905 Chrome	\$4.21	2.31	1.29	780	616	550
	Sq. Inches	\$4.84	2.52	1.41	851	684	583
18 28	No. 49905 Chrome	\$5.22	2.82	1.64	1.04	886	759
	Sq. Inches	\$6.46	3.73	2.81	2.15	1.89	1.62
29 41	No. 49905 Chrome	\$5.70	3.05	1.78	1.13	962	826
	Sq. Inches	\$6.89	4.18	3.17	2.61	2.39	2.04
42 56	No. 49905 Chrome	\$5.94	3.66	2.31	1.67	1.41	1.24
	Sq. Inches	\$7.08	4.99	3.85	3.32	3.03	2.59

4 We will advise you if an order is not suitable for our production methods.

Embossable Aluminum and Write-On Decals



Die-Cutting: No die charge for decals with square corners unless either dimension is less than one inch, for circles with a diameter every 1/2", or on repeat orders.
All others add \$180.00(D).

		125	250	500	1000	1500	2500
6 10	No. 49905 Chrome	\$3.29	1.92	1.09	599	479	405
	Sq. Inches	\$3.57	1.91	1.09	645	538	440
11 17	No. 49905 Chrome	\$4.21	2.31	1.29	780	616	550
	Sq. Inches	\$4.84	2.52	1.41	851	684	583
18 28	No. 49905 Chrome	\$5.22	2.82	1.64	1.04	886	759
	Sq. Inches	\$6.46	3.73	2.81	2.15	1.89	1.62
29 41	No. 49905 Chrome	\$5.70	3.05	1.78	1.13	962	826
	Sq. Inches	\$6.89	4.18	3.17	2.61	2.39	2.04
42 56	No. 49905 Chrome	\$5.94	3.66	2.31	1.67	1.41	1.24
	Sq. Inches	\$7.08	4.99	3.85	3.32	3.03	2.59

4 We will advise you if an order is not suitable for our production methods.

Polycarbonate Decals

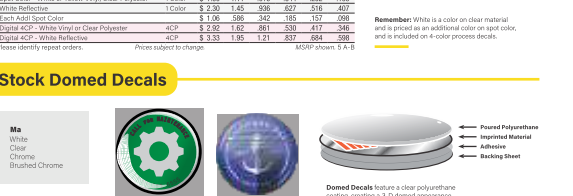


Die-Cutting: No die charge for decals with square corners unless either dimension is less than one inch, for circles with a diameter every 1/2", or on repeat orders.
All others add \$180.00(D).

		125	250	500	1000	1500	2500
6 10	No. 485 017 Polycarbonate	\$4.91	2.83	1.79	1.24	1.06	781
	Sq. Inches	\$5.20	3.03	1.93	1.42	1.06	815
11 17	No. 485 017 Polycarbonate	\$5.86	3.28	2.48	1.83	1.51	131
	Sq. Inches	\$6.53	3.65	3.05	2.32	2.08	164
18 28	No. 485 017 Polycarbonate	\$7.06	4.71	3.40	2.65	2.24	186
	Sq. Inches	\$8.24	5.24	3.91	3.18	2.84	249
29 41	No. 485 017 Polycarbonate	\$7.32	4.74	3.31	2.54	2.24	186
	Sq. Inches	\$8.08	5.47	4.38	3.11	2.71	234
42 56	No. 485 017 Polycarbonate	\$8.61	5.59	4.05	4.78	3.68	323
	Sq. Inches	\$9.47	6.42	4.83	3.57	3.20	426

5 We will advise you if an order is not suitable for our production methods.

Hard Hat Decals

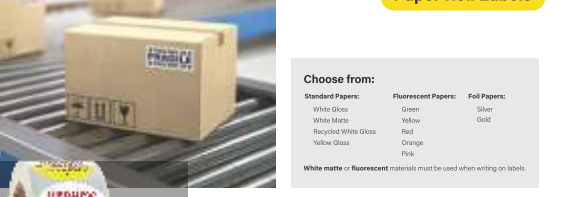


Die-Cutting: No die charge for decals with square corners unless either dimension is less than one inch, for circles with a diameter every 1/2", or on repeat orders.
All others add \$180.00(D).

		125	250	500	1000	1500	2500
3 7/8 5	No. 5180 Circle, No. 5200 Square, No. 5400 Oval, No. 5500 Rectangle	\$118.60	139.66	126.42	110.77	78.26	52.98
	Sq. Inches	\$130.80	151.71	138.36	122.57	87.78	62.99
7 01 11	No. 5180 Circle, No. 5200 Square, No. 5400 Oval, No. 5500 Rectangle	\$144.79	167.04	150.50	136.05	104.75	83.08
	Sq. Inches	\$158.45	182.54	163.00	145.00	110.00	81.00
20 01 24 36	No. 5180 Circle, No. 5200 Square, No. 5400 Oval, No. 5500 Rectangle	\$184.45	212.37	191.78	171.86	131.86	102.86
	Sq. Inches	\$201.70	232.37	211.77	191.86	146.86	113.86

6 We will advise you if an order is not suitable for our production methods.

Stock Domed Decals

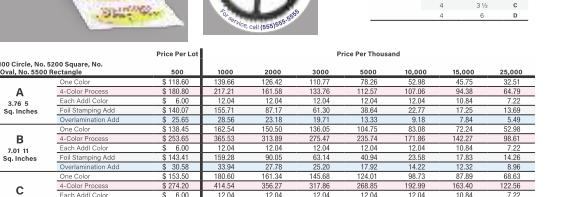


Die-Cutting: No die charge for decals with square corners unless either dimension is less than one inch, for circles with a diameter every 1/2", or on repeat orders.
All others add \$180.00(D).

		125	250	500	1000	1500	2500
No. 911	No. 911 2" dia.	\$2.69	1.97	1.19	1.38	1.27	
	Sq. Inches	\$3.20	2.33	1.37	1.70	1.57	
No. 918, 919	No. 918 3 1/2" dia.	\$3.41	2.50	2.22	1.94	1.84	
	Sq. Inches	\$4.05	2.93	2.59	2.22	2.04	

6 We will advise you if an order is not suitable for our production methods.

Paper Roll Labels



Die-Cutting: No die charge for decals with square corners unless either dimension is less than one inch, for circles with a diameter every 1/2", or on repeat orders.
All others add \$180.00(D).

		125	250	500	1000	1500	2500
A	No. 5180 Circle, No. 5200 Square, No. 5400 Oval, No. 5500 Rectangle	\$118.60	139.66	126.42	110.77	78.26	52.98
	Sq. Inches	\$130.80	151.71	138.36	122.57	87.78	62.99
B	No. 5180 Circle, No. 5200 Square, No. 5400 Oval, No. 5500 Rectangle	\$144.79	167.04	150.50	136.05	104.75	83.08
	Sq. Inches	\$158.45	182.54	163.00	145.00	110.00	81.00
C	No. 5180 Circle, No. 5200 Square, No. 5400 Oval, No. 5500 Rectangle	\$184.45	212.37	191.78	171.86	131.86	102.86
	Sq. Inches	\$201.70	232.37	211.77	191.86	146.86	113.86

7 We will advise you if an order is not suitable for our production methods.

BOPP Roll Labels



Die-Cutting: No die charge for decals with square corners unless either dimension is less than one inch, for circles with a diameter every 1/2", or on repeat orders.
All others add \$180.00(D).

		125	250	500	1000	1500	2500
A	No. 5180 Circle, No. 5200 Square, No. 5400 Oval, No. 5500 Rectangle	\$118.60	139.66	126.42	110.77	78.26	52.98
	Sq. Inches	\$130.80	151.71	138.36	122.57	87.78	62.99
B	No. 5180 Circle, No. 5200 Square, No. 5400 Oval, No. 5500 Rectangle	\$144.79	167.04	150.50	136.05	104.75	83.08
	Sq. Inches	\$158.45	182.54	163.00	145.00	110.00	81.00
C	No. 5180 Circle, No. 5200 Square, No. 5400 Oval, No. 5500 Rectangle	\$184.45	212.37	191.78	171.86	131.86	102.86
	Sq. Inches	\$201.70	232.37	211.77	191.86	146.86	113.86

8 We will advise you if an order is not suitable for our production methods.